

An architectural rendering of the Crestwood Community Center, a two-story building with a mix of stone and wood siding, large windows, and a prominent wooden beam structure under the roof. The building is surrounded by lush greenery, including tall grasses and flowering plants in the foreground. Several people are depicted in the scene: some are sitting on a low concrete wall in front of the building, while others are standing or walking nearby. The entire image is overlaid with a semi-transparent green filter.

CRESTWOOD COMMUNITY CENTER

WHITECLIFF PARK NATURE PLAYScape

PARK BOARD MEETING

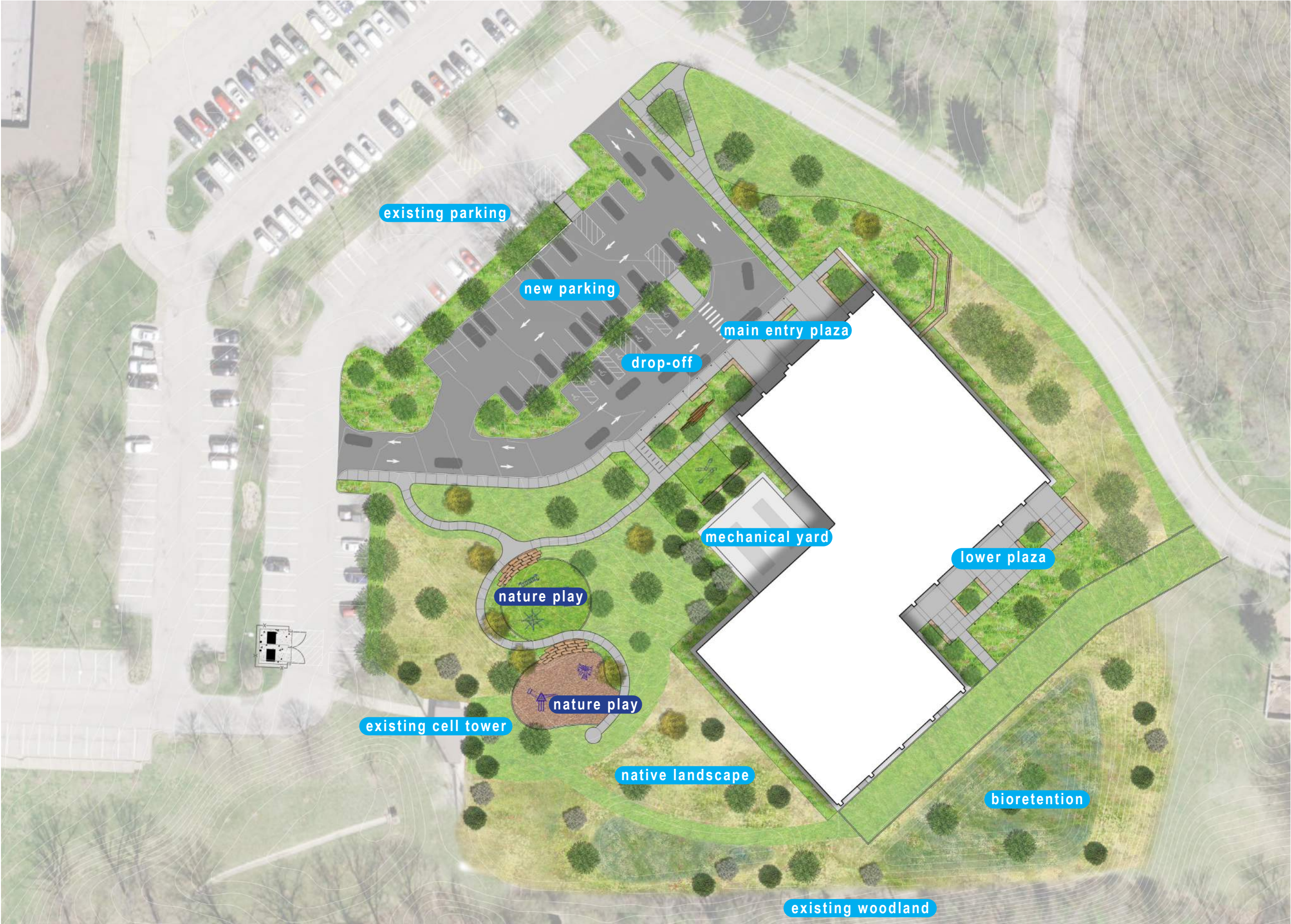
DECEMBER 17, 2024

CRESTWOOD COMMUNITY CENTER

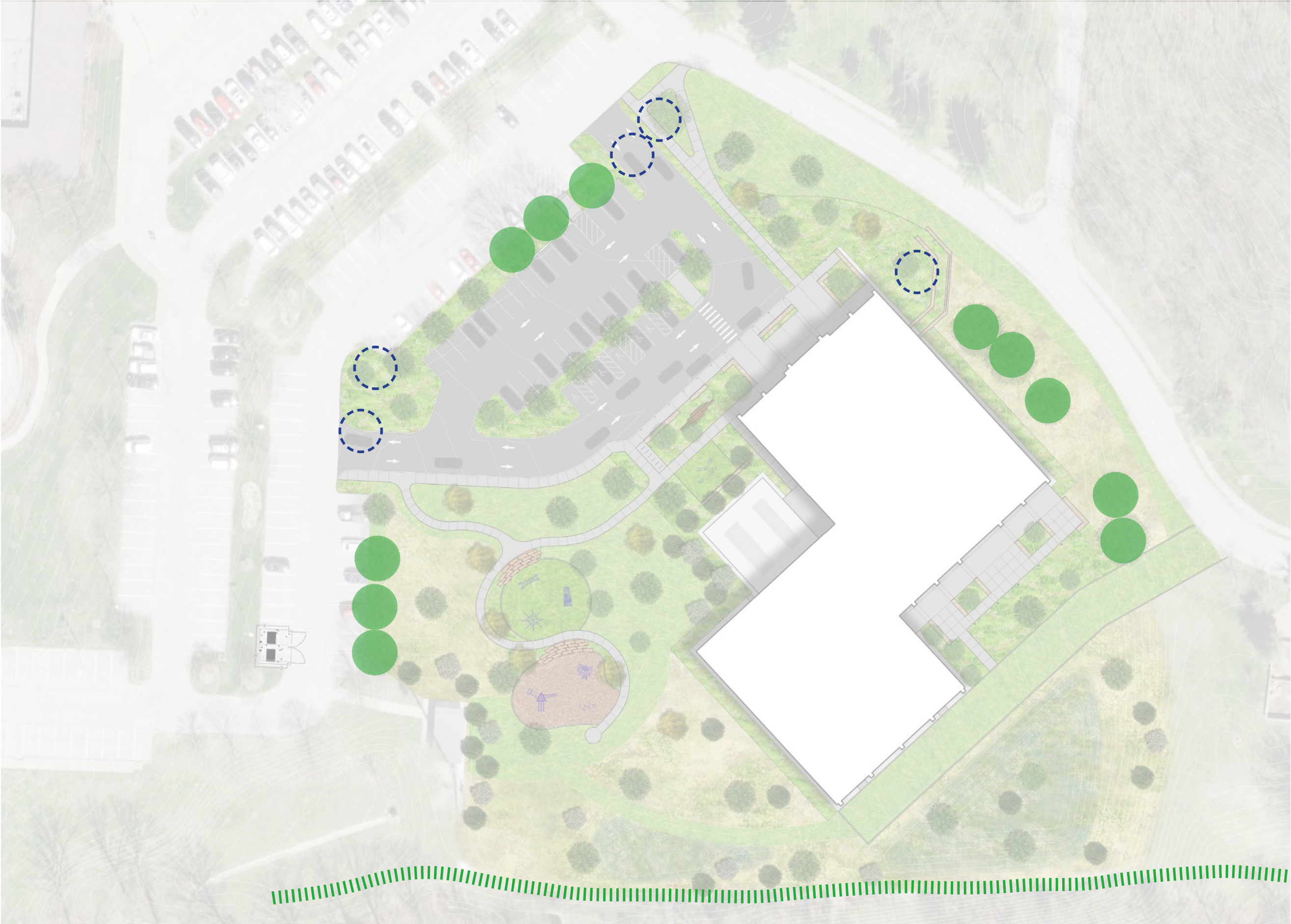


DG2 Design
Landscape Architecture

OVERALL SITE PLAN

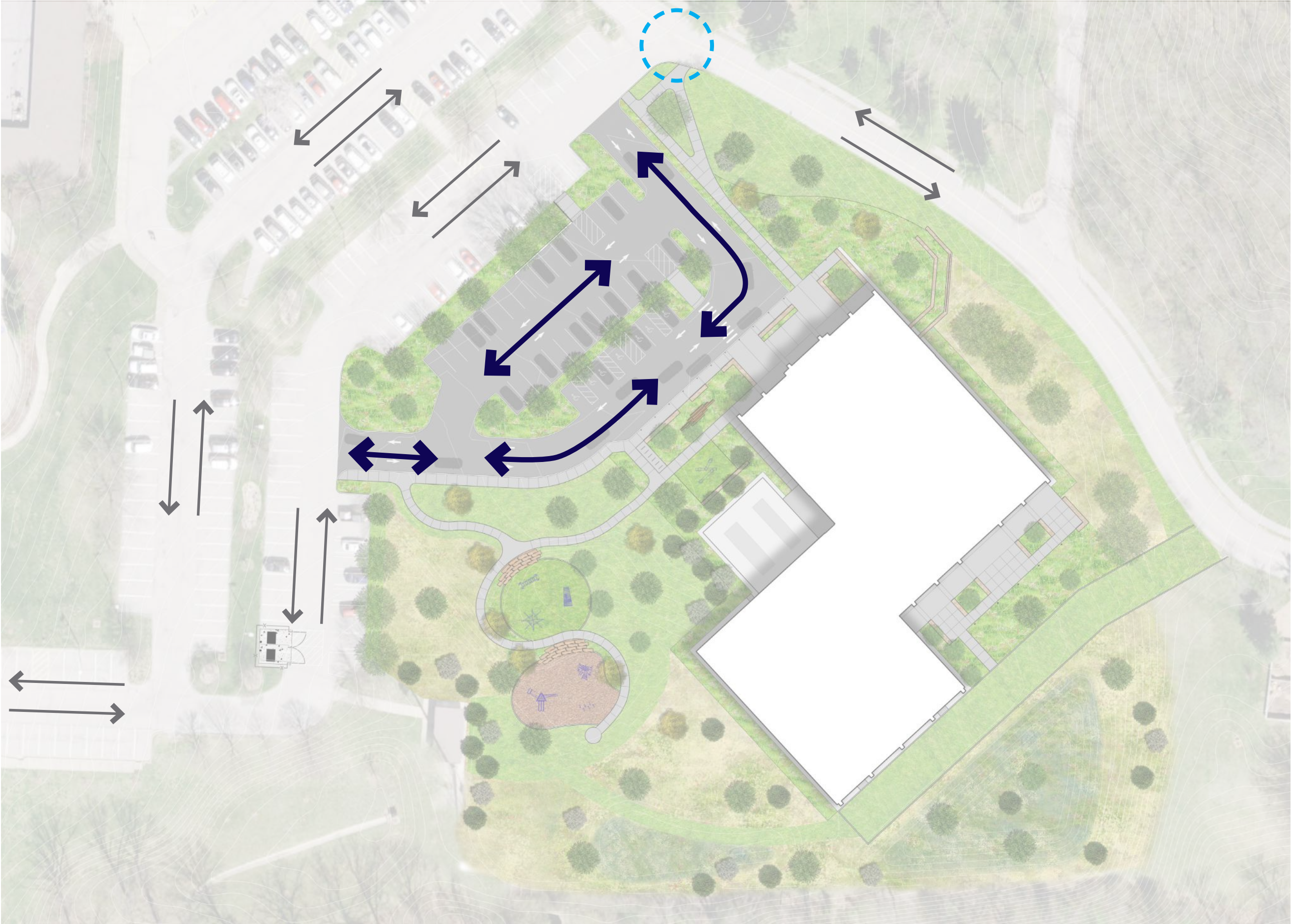


EXISTING TREES



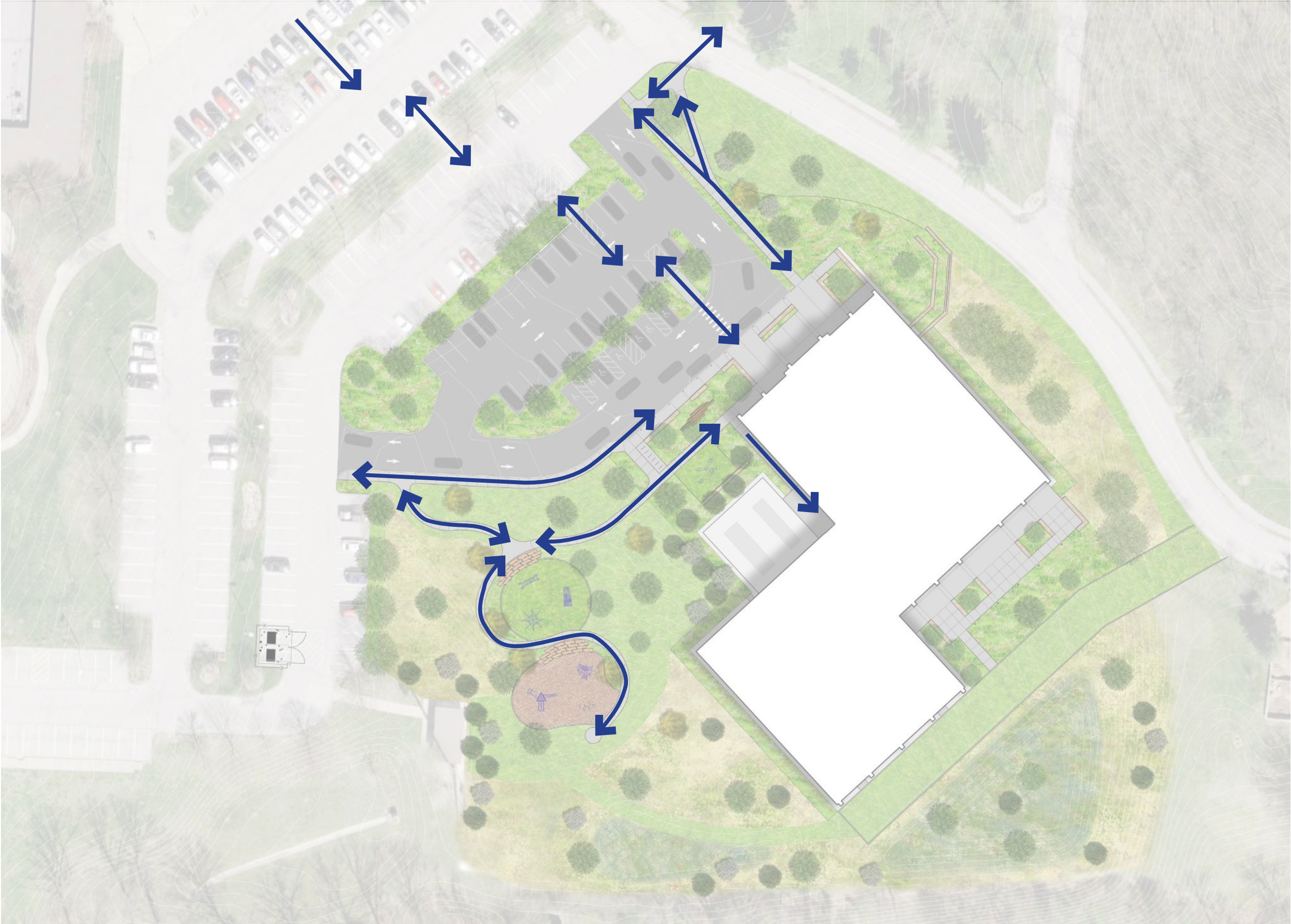
- EXISTING WOODLAND TO REMAIN
- EXISTING TREE TO BE PROTECTED
- TREE TO BE REMOVED

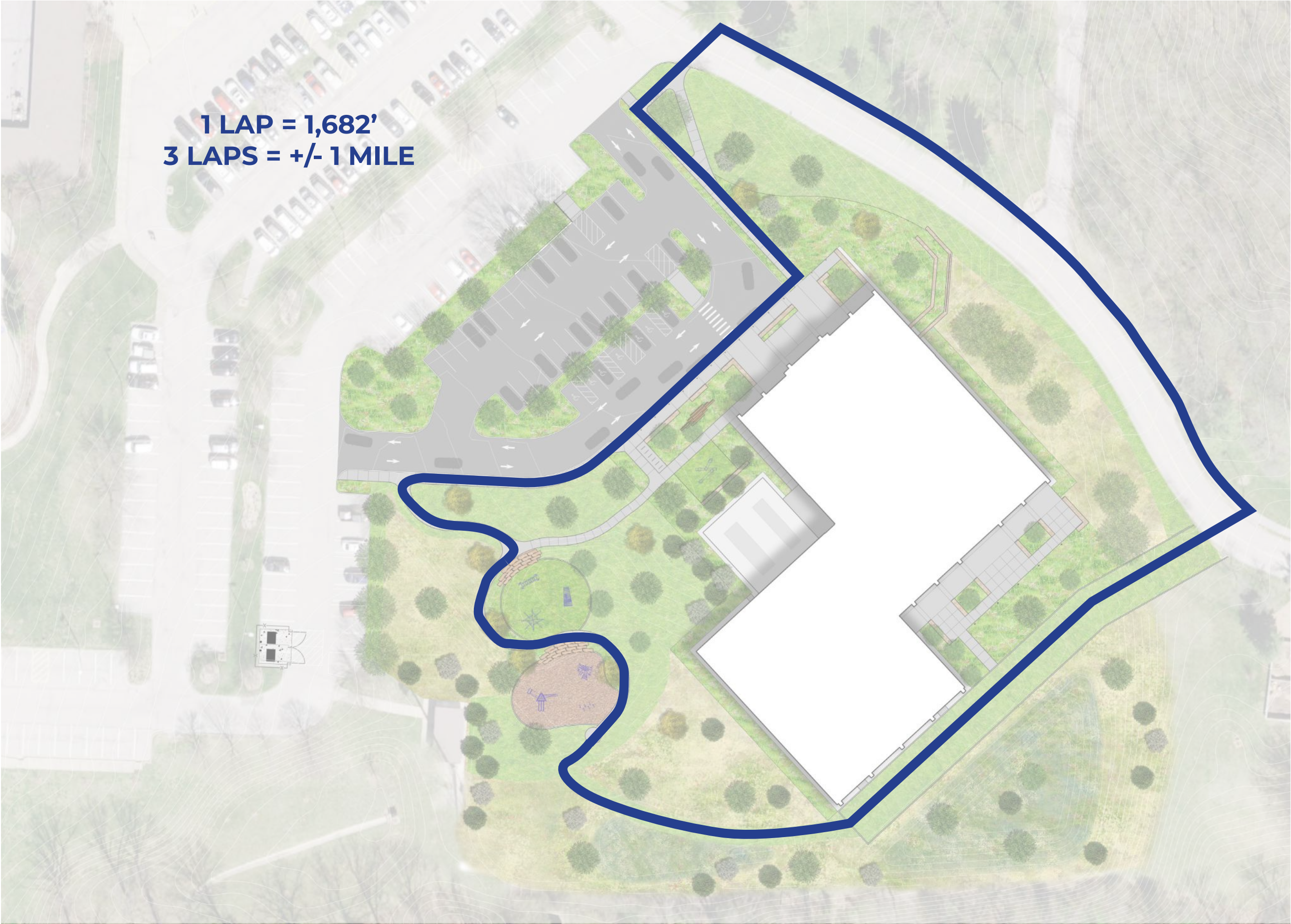
VEHICULAR CIRCULATION

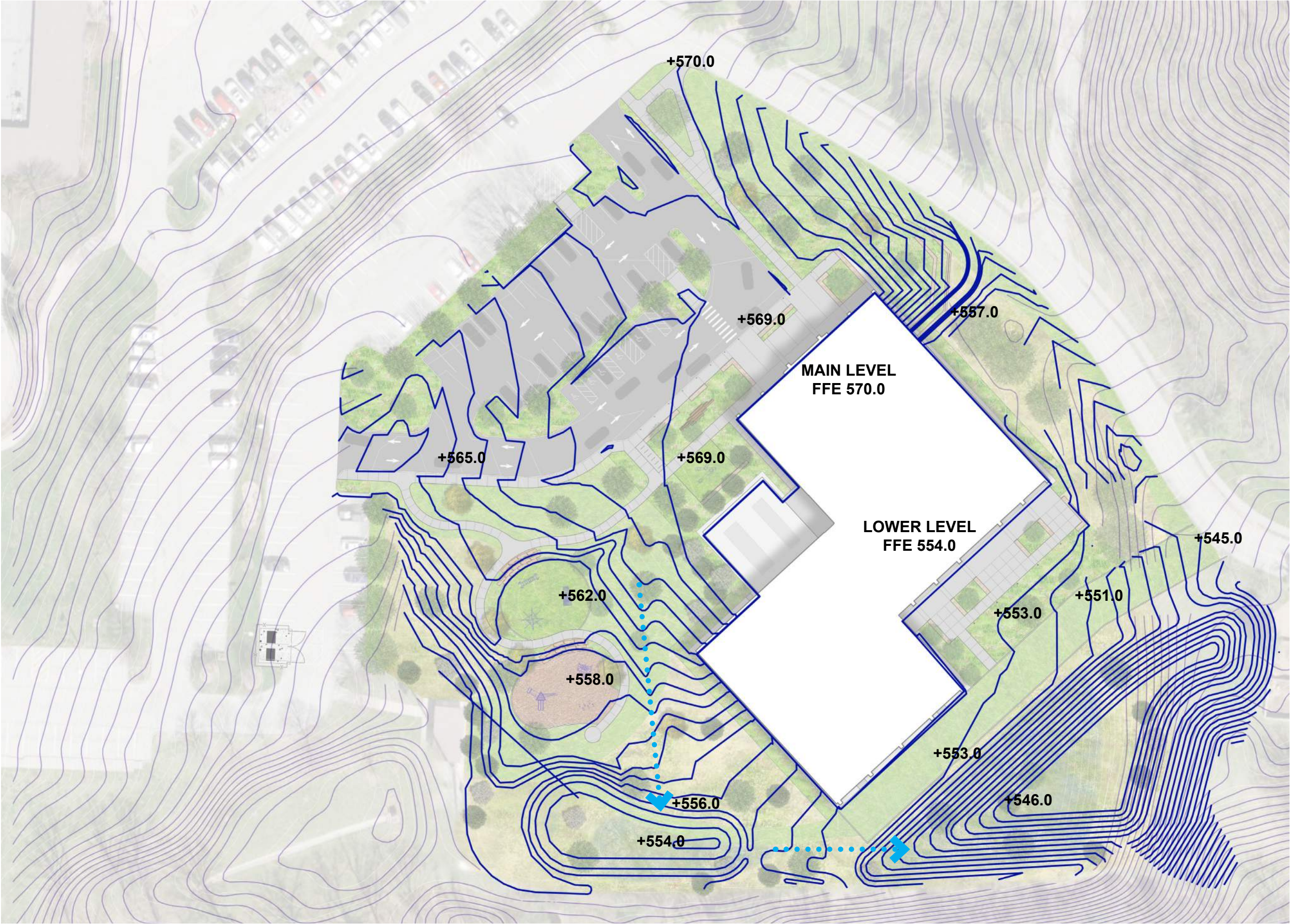


- ➡ NEW TRAFFIC ROUTES
- ↔ EXISTING TWO-WAY TRAFFIC
- ⦿ KEY INTERSECTION

PEDESTRIAN CIRCULATION









LONDON PLANETREE



LACEBARK ELM



SHAWNEE BRAVE BALD CYPRESS



SWAMP WHITE OAK



PINE



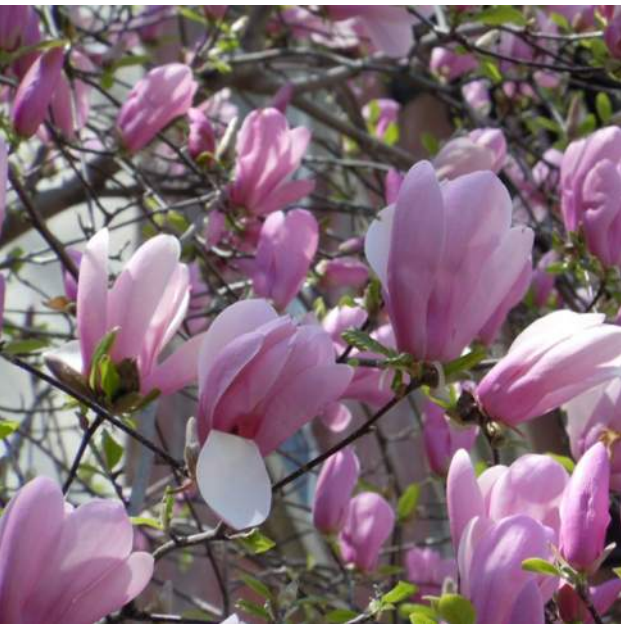
YELLOWWOOD



BLACK GUM



DOGWOOD



MAGNOLIA



REDBUD



LAWN



NATIVE SEED / SHORT-GRASS



BIORETENTION



BLUE GRAMA GRASS



PRAIRIE DROPSEED



ALLIUM



RED-TWIG DOGWOOD



BLACK EYED SUSAN



LIATRIS



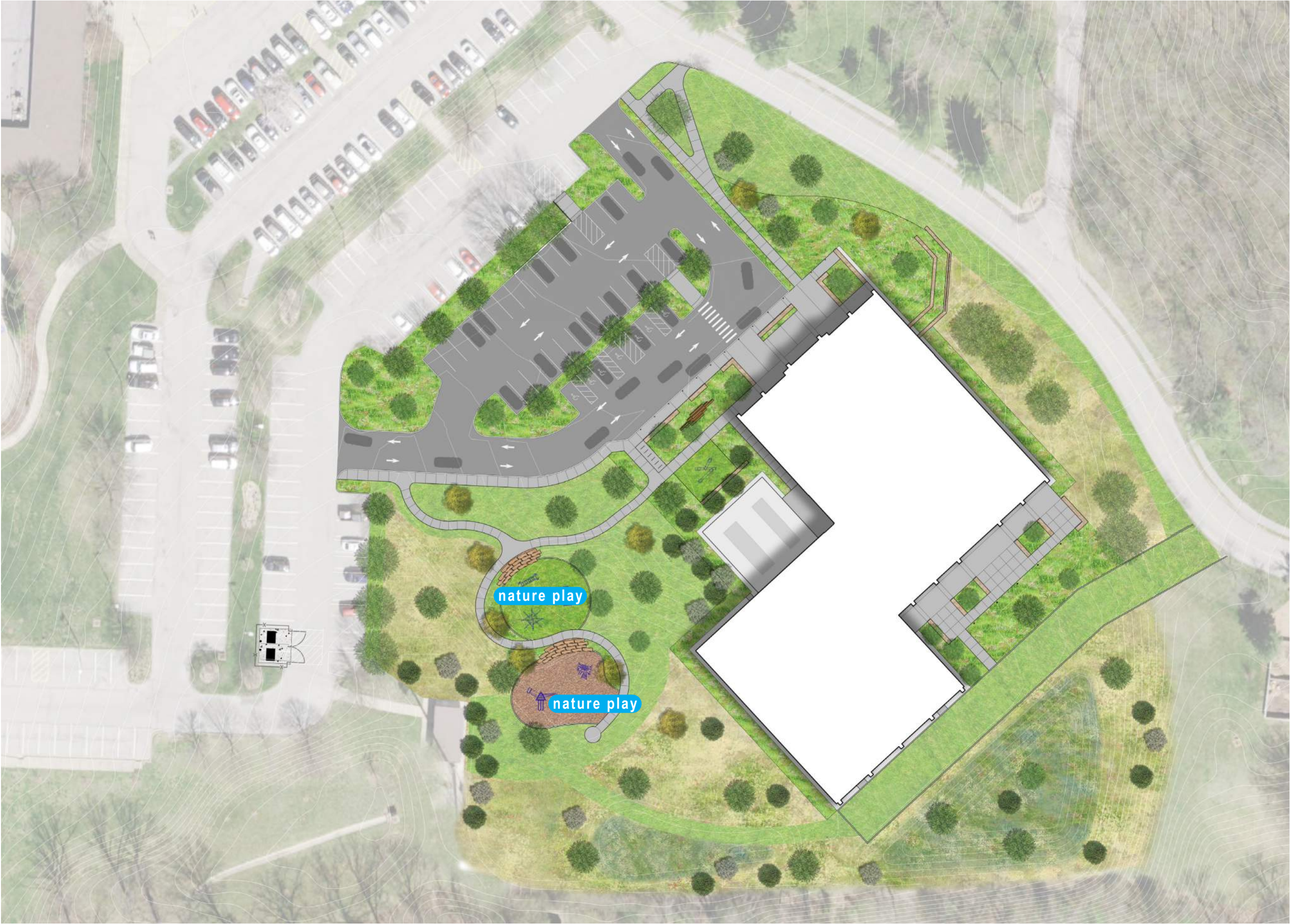
SEDGE



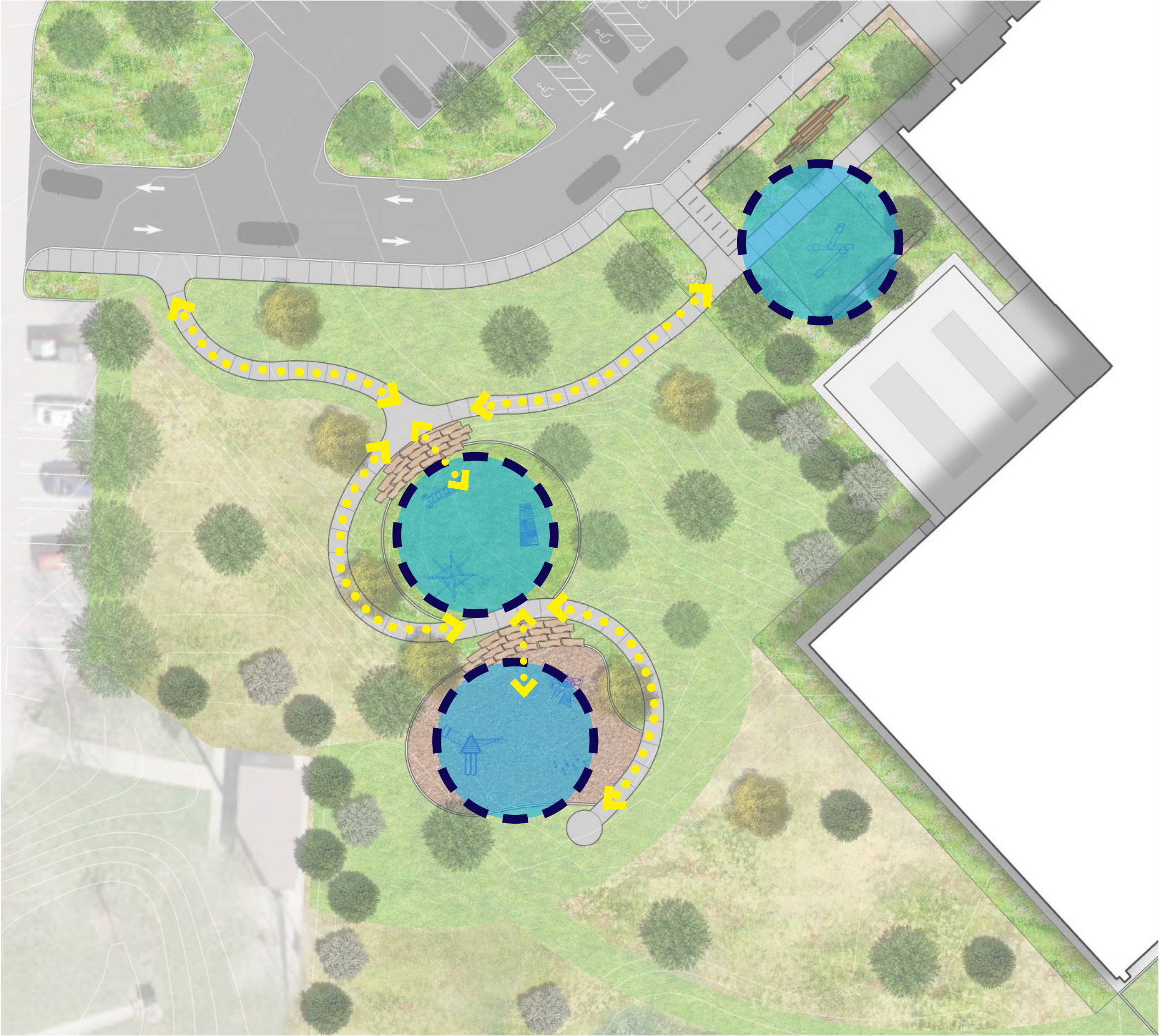
CRESTWOOD COMMUNITY CENTER













Proposition A passed in April by the residents of Crestwood. One of the elements of the proposition was to add a nature playscape in Whitecliff Park.

Therefore, we are asking for the community's input on the features of this nature playscape.



On display are several potential play pieces which could be part of the future nature playscape project.

Please select **up to five (5)** play pieces that you think would make for a great play experience.

Logpile

User age: 3+

User Capacity: 9



A compact, natural climbing experience, especially for the little ones.

Gives children open ended play opportunities.

Offer an organic climbing experience that mimics climbing fallen trees found on a forest floor.

Children can play alone or with others, have ample space for many children to play at once.

They are low to the ground and therefore lower risk, but their angles and surface give children the ability to develop depth perception and body awareness.

Songbird

User age: 2-5

User Capacity: 7



The Songbird is a whimsical and familiar form.

The back of the bird is a perfect place for lounging.

Two accessible interior benches are a cozy spot to meet with a small group of friends in the shade.

The Songbird creates beautiful opportunities for social play as well as climbing for the more adventurous thrill seeker.

The Songbird is an accessible ground-level play feature when situated on an accessible path or surfacing.

Wobble Bridge

User age: 5-12

User Capacity: 3



Invites children to try out their balancing skills

The horizontal logs are responsive to every movement, training important physical skills such as using balance and muscles in feet, legs, core and arms to adjust equilibrium

The Wobble bridge is also a highly social experience

It additionally encourages children to cooperate and negotiate with each other as well as take turns

Crawling Pyramid

User age: 5-12

User Capacity: 6



The randomly placed beams are a magnet for adventurous players, eager to climb and explore the unit

With its inclined layout, the Crawling Pyramid constantly challenges the sense of balance in children

The many horizontal beams of the Crawling Pyramid invite a break for socializing, an important part of developing social-emotional skills and forming friendships

Slide Platform

User age: 2-5

User Capacity: 9



Children love slides

The flexform seat has some movement so it is a fun surface to climb on with friends

The post and rope climber is a low-risk challenge for young children who may be developing early balance skills

Children can play alone or with others

The platform is large enough to hold several children who may imagine themselves on the bow of a ship or perched in a treehouse!

Climbing Net

User age: 5-12

User Capacity: 7



The Climbing Net is a versatile climber that children will want to try again and again

Trains proprioception, spatial awareness and cross-coordination

The climbing ropes offer a different kind of climbing, clinging on to ropes while going upwards

The varied climbing trains the arm, leg and core muscles intensely

Can hold many children, climbing together or taking a break, developing important social-emotional skills

Spinner Plate

User age: 5+

User Capacity: 1



Freestanding spinners provide a fun way for kids to develop better depth perception, balance and cause-and-effect

The spinning motion stimulates kids' vestibular sense, which is the sense that maintains balance while the body is in motion

The sense of balance is hugely stimulated when spinning and the Spinner Plate helps improve the equilibrium of the child,

Bird Nest Swing

User age: 2-12

User Capacity: 7



The Bird's Nest Swing allows for multiple users of all abilities and most ages and makes it a thrilling, swinging experience.

Swinging trains the children's ABCs: agility, balance and coordination, as well as their spatial awareness.

These motor skills are crucial to being able to judge distance and navigate spaces safely.

Swings allow for standing, sitting, lying – and not least, jumping off. All of these activities train the arm, leg and core muscles.

Signal Peak (climber)

User age: 5-12



The Signal Peak offers a space for children to climb and balance.

Its design encourages physical activity, helping kids develop strength and hand eye coordination.

The structure also promotes social skills like turn-taking and sharing.



Mini Arch

User age: 2-5



The Arch play equipment on playgrounds offers versatile play opportunities for children.

It allows kids to climb, run around, and explore, helping to develop strength, coordination and also balance.

The Arch also serves as a hiding spot or a space for imaginative role play, encouraging creativity and social interaction.

With its multi-functional design, the Arch promotes physical activity, cognitive growth, and teamwork.

Woodland Fort

User age: 5-12

User Capacity: 10



Climbing structures such as the Woodland Fort benefit both young children and older kids

For younger children, they help develop strength, balance, and coordination, while enhancing fine and gross motor skills

As children climb, hang, and maneuver, they also improve spatial awareness

Older kids can continue to challenge themselves promoting problem-solving, perseverance, and resilience

Stilts

User age: 5-12

User Capacity: 3



The Stilts have a basic play message: balance through without touching the ground

The Stilts invite jumping or balancing from one to the next

When balancing from stilt to stilt, children train their proprioception and sense of balance

Balance and proprioception are fundamental in confidently managing the body in space.

Spring Board

User age: 2-12

User Capacity: 3



The Spring Board is a platform for sitting, standing, lying, even jumping. All have a chance to play together, in equal and unequal numbers

The rocking movement trains the senses of balance and space, crucial for body confidence and avoiding falling

A well-developed sense of balance is fundamental for the ability to sit still and concentrate

When standing on the platform, children will jump, building bone density for life

Hillside Slide

User age: 2-5



Slides on playgrounds promote the physical development, coordination, and balance by encouraging climbing and sliding down

They help build motor skills, and confidence as children navigate challenges

Slides also foster social interaction, cooperation, and cognitive growth through problem-solving and sensory stimulation

Slides help to develop essential skills while learning to take safe risks



CRESTWOOD
Parks and Recreation

A PLACE FOR Nature Play

Proposition A passed in April by the residents of Crestwood. One of the elements of the proposition was to add a nature playscape in Whitecliff Park. The city determined it would be ideal to incorporate the playscape in with the design of the new Community Center and surrounding landscape. Therefore, we are asking for the community's input on the features of this nature playscape.

1. Are you a Crestwood resident?
☐ Yes
☐ No

2. What is your age?
☐ Under 18
☐ 18-24
☐ 25-34
☐ 35-44
☐ 45-54
☐ 55-64
☐ 65+

3. How often do you visit Whitecliff Park?
☐ Every day
☐ A few times a week
☐ About once a week
☐ A few times a month
☐ Once a month
☐ More than once a month

How many children or grandchildren in your family?



Whitecliff Park Nature Playscape

Woodland Fort

User age: 5-12
User Capacity: 10



Climbing structures such as the Woodland Fort benefit both young children and older kids

For younger children, they help develop strength, balance, and coordination, while enhancing fine and gross motor skills

- children climb, hang, and maneuver, they also improve spatial awareness

Older kids can continue to challenge themselves promoting problem-solving, perseverance, and resilience

Spinner Plate

User age: 5+
User Capacity: 1



Freestanding spinners provide a fun way for kids to develop better depth perception, balance and cause-and-effect

The spinning motion stimulates kids' vestibular sense, which is the sense that maintains balance while the body is in motion

The sense of balance is hugely stimulated when spinning and the Spinner Plate helps improve the equilibrium of the child.

Spring Board

User age: 2-12
User Capacity: 3



The Spring Board is a platform for sitting, standing, lying, even jumping. All have a chance to play together, in equal and unequal numbers

The rocking movement trains the senses of balance and space, crucial for body confidence and avoiding falling

A well-developed sense of balance is fundamental for the ability to sit still and concentrate

When standing on the platform, children will jump, building bone density for life

Hillside Slide

User age: 2-5



Slides on playgrounds promote the physical development, coordination, and balance by encouraging climbing and sliding down

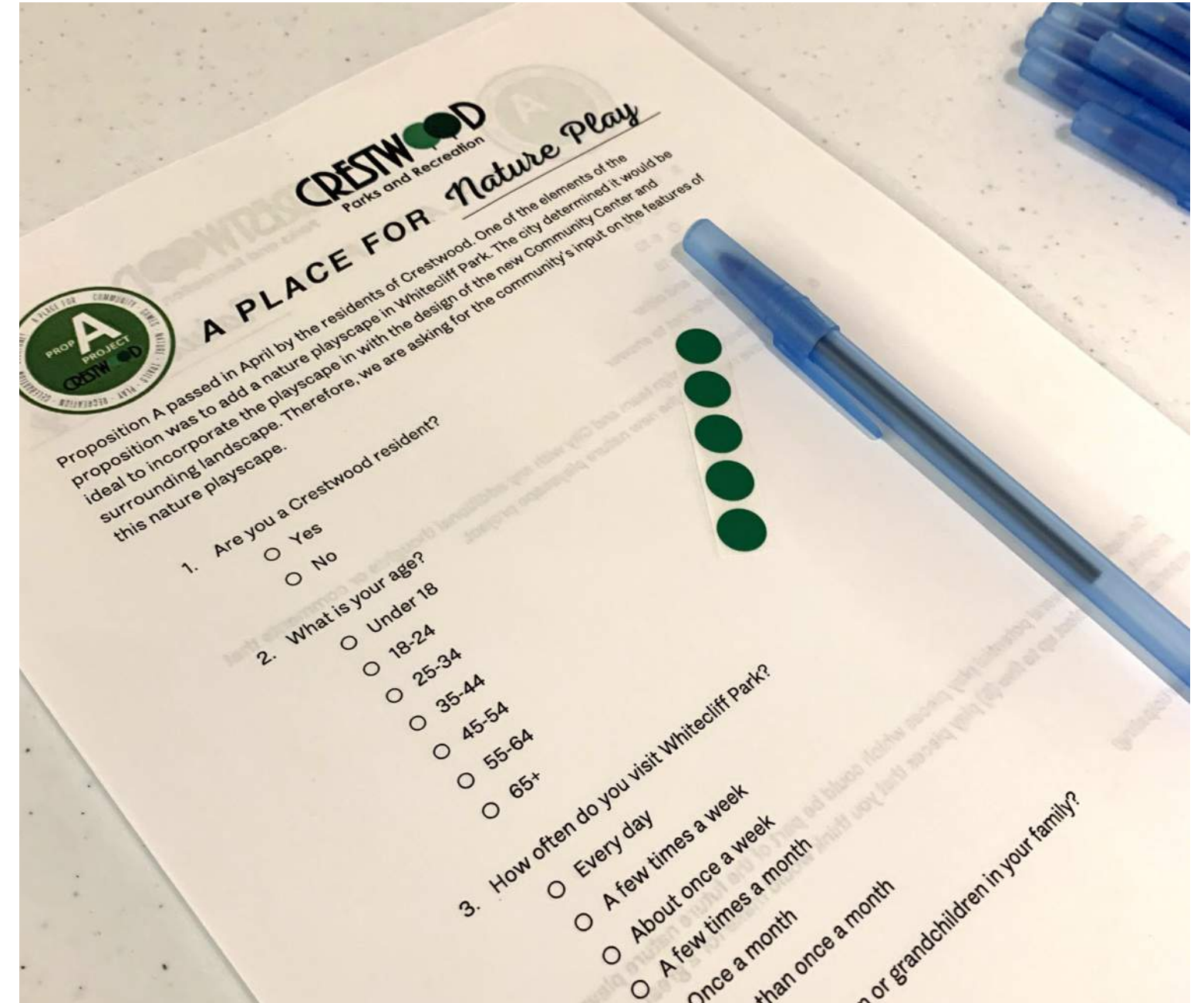
- they help build motor skills, and confidence as children navigate challenges

Slides also foster social interaction, cooperation, and cognitive growth through problem-solving and sensory stimulation

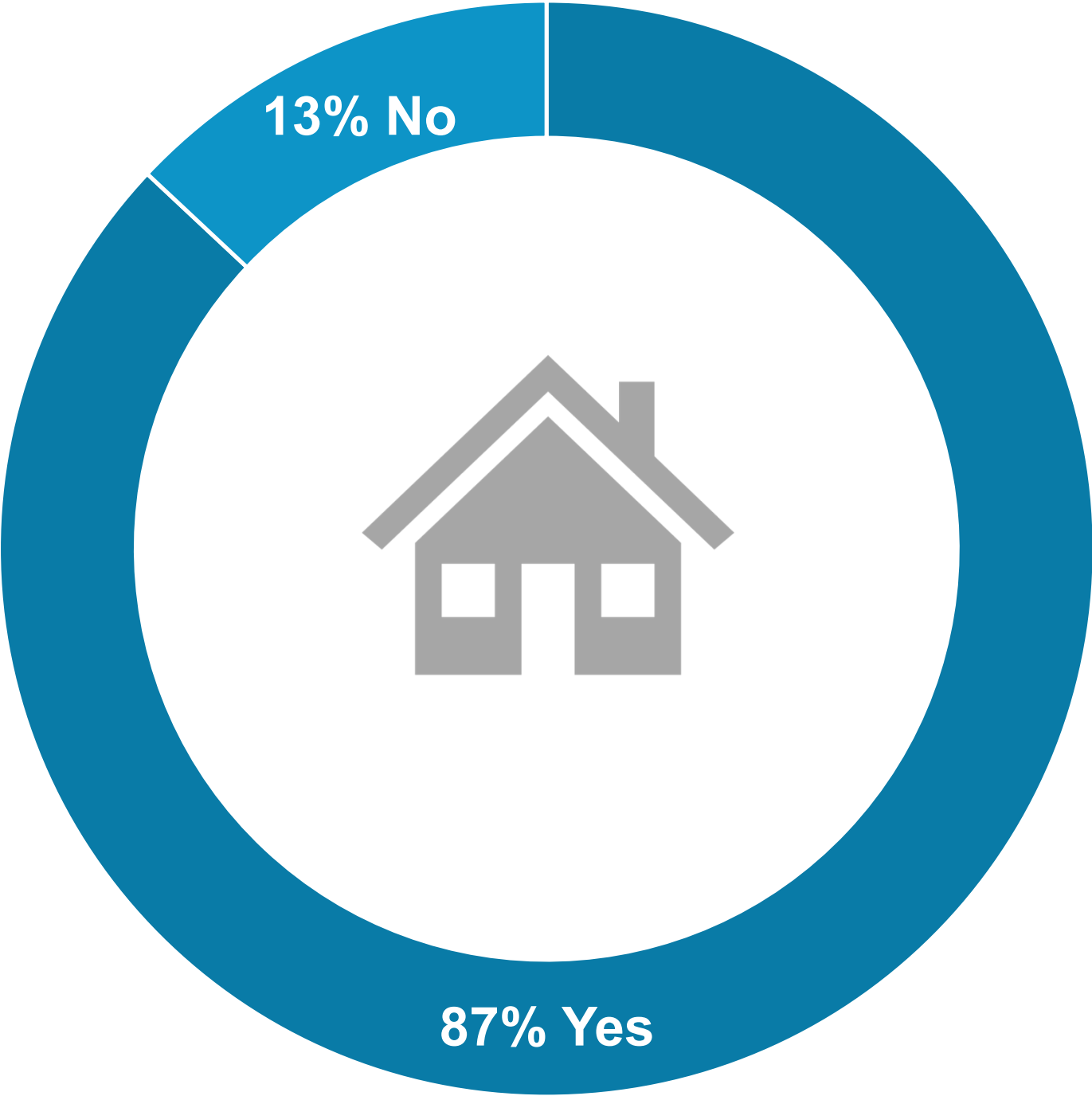
Slides help to develop essential skills while learning to take safe risks

34 Online
 18 Open House
 48 Christmas in Crestwood

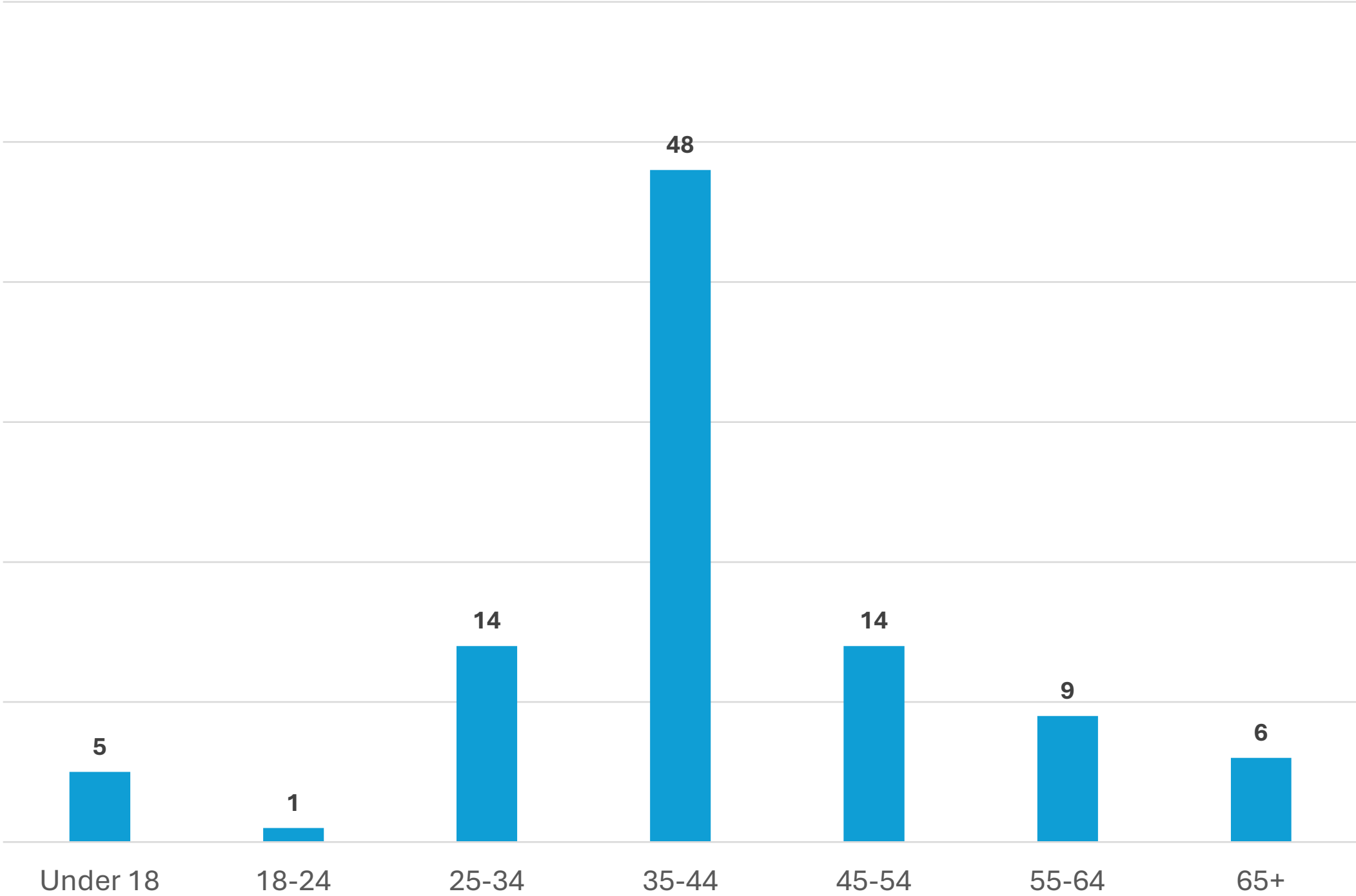
100 Responses



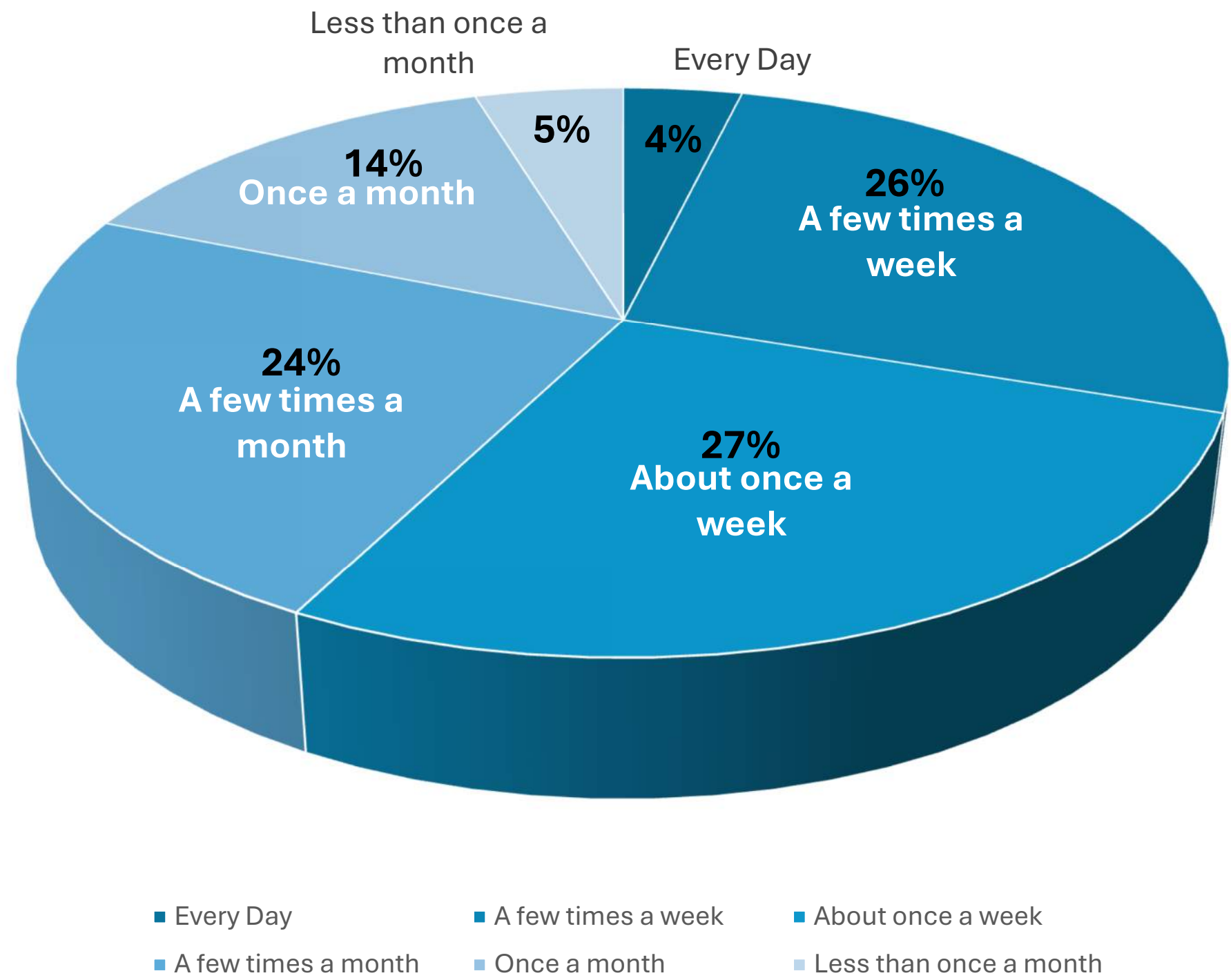
Are you a Crestwood resident?



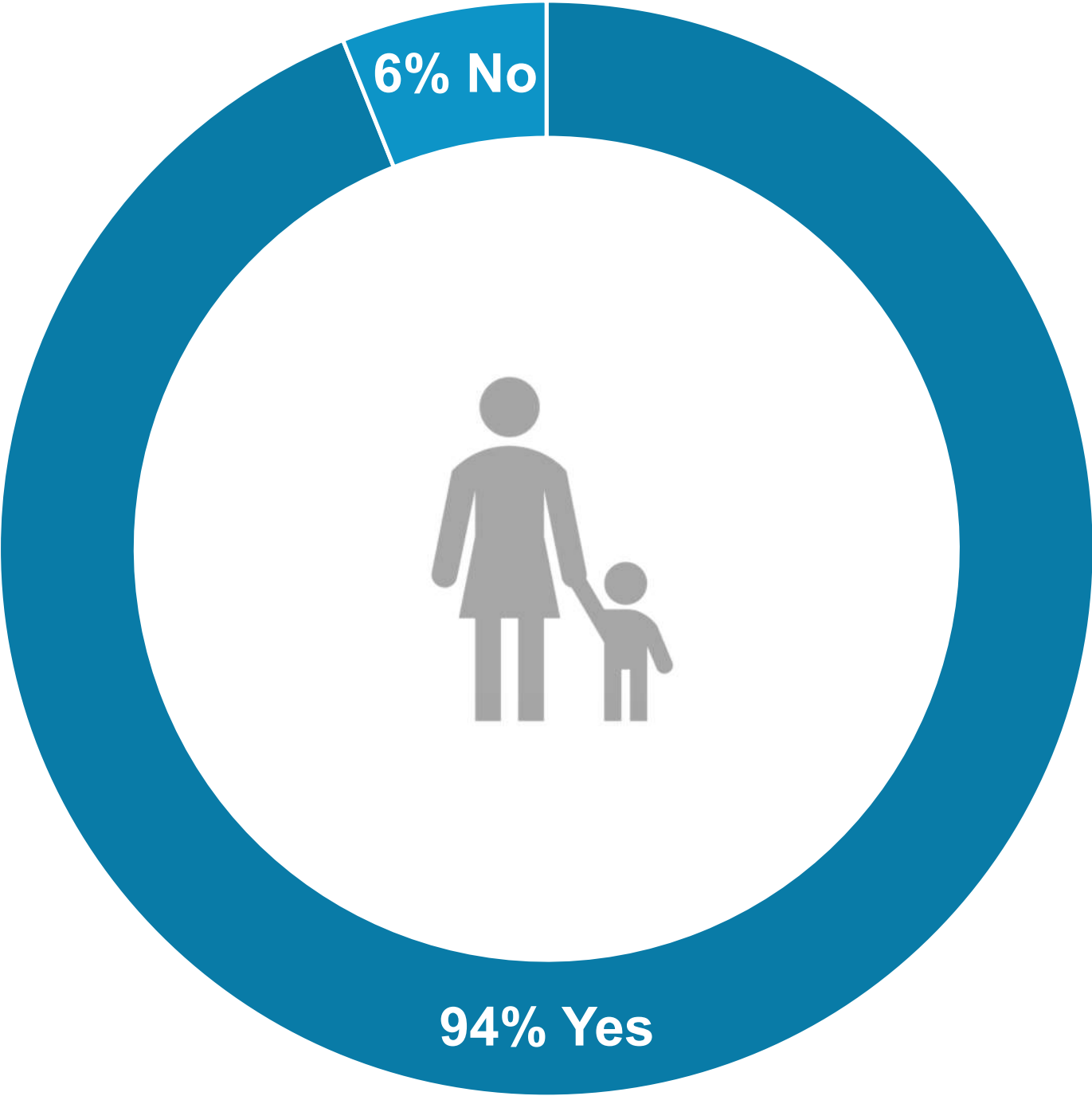
What is your age?



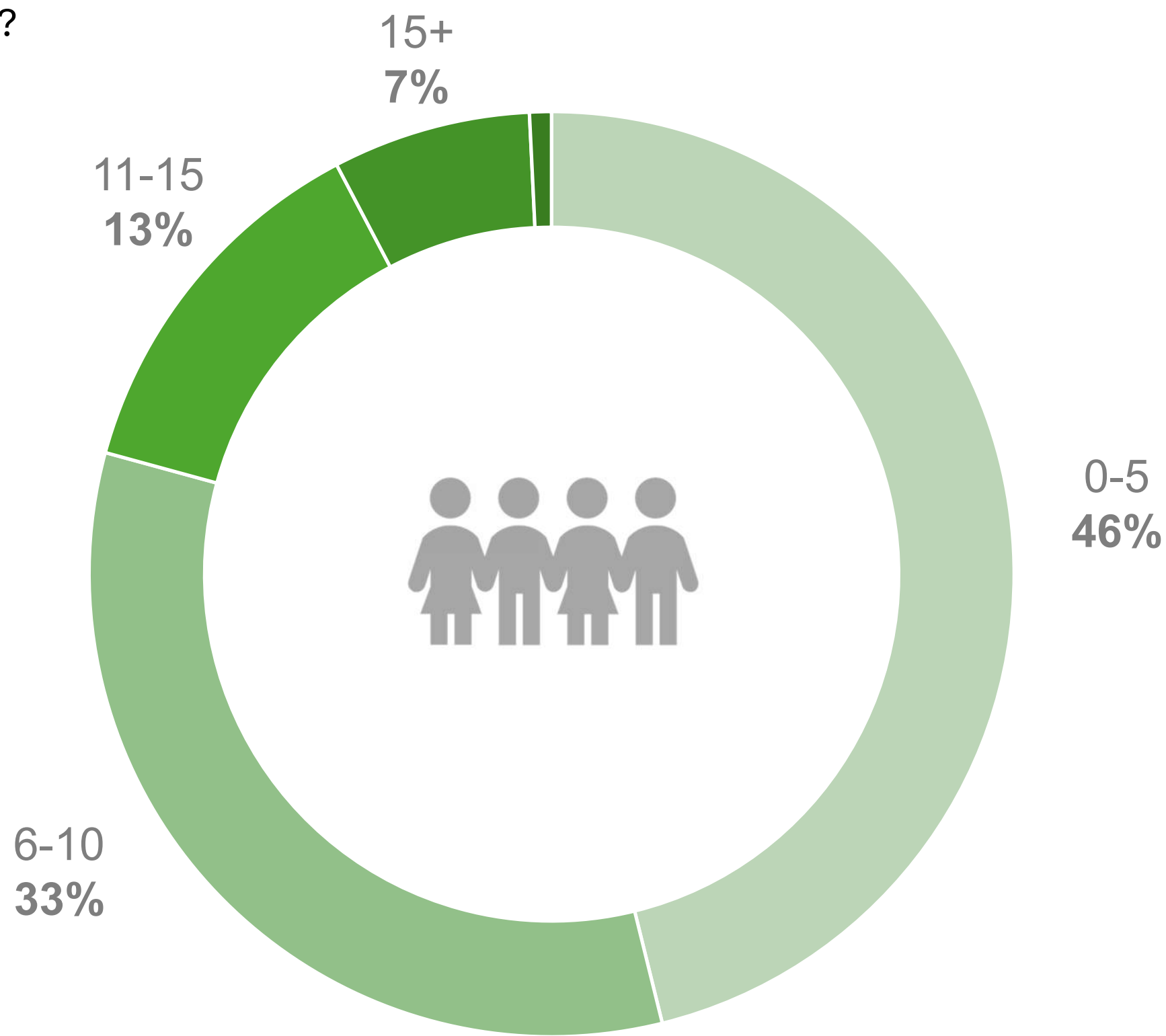
How often do you visit Whitecliff Park?



Do you have children or grandchildren in your family?



If Yes, what are their ages?



36 unique, individual comments

6 Shade

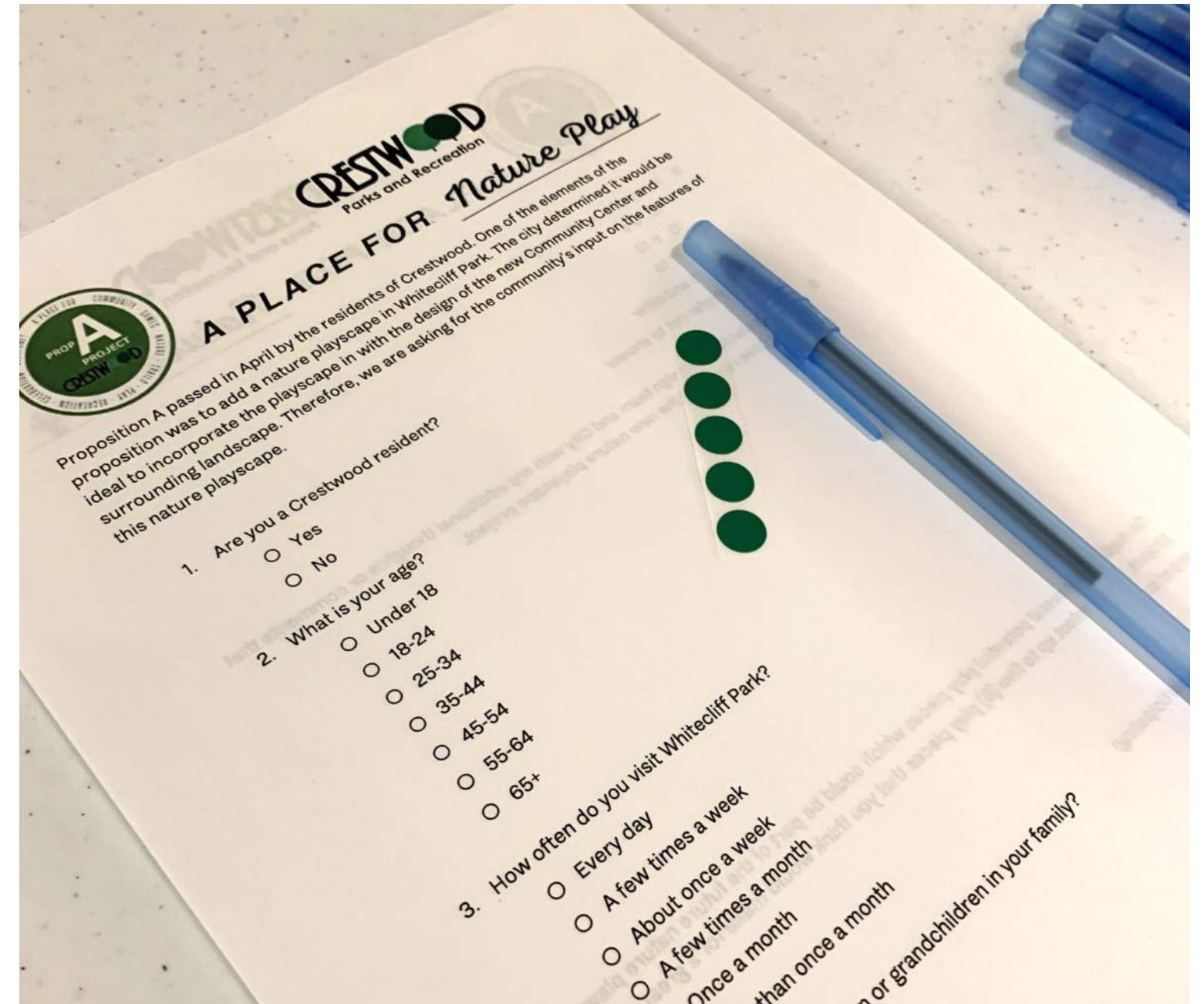
4 Water Play

3 Slides + Swings

2 Safety + Accessibility

10 Excited / Thank you!

11 Others



Love the nature theme!

It looks amazing, we can't wait to see it!

Incorporate reused / repurposed materials

Sensory garden for the kids

Native plants and pollinators, an educational opportunity

Incorporate natural slopes

Durable materials + soft surfaces

1st	Hillside Slide	90
2nd	Birds Nest Swing	73
3rd	Wobble Bridge	68
4th	Signal Peak	65
5th	Climbing Net	49
6th	Woodland Fort	48
7th	Stilts	40
8th	Logpile	39
9th	Slide Platform	38
10th	Mini Arch	37
11th	Spinner Plate	36
12th	Songbird	32
13th	Spring Board	27
14th	Crawling Pyramid	20

NATURE PLAY RECOMMENDATIONS

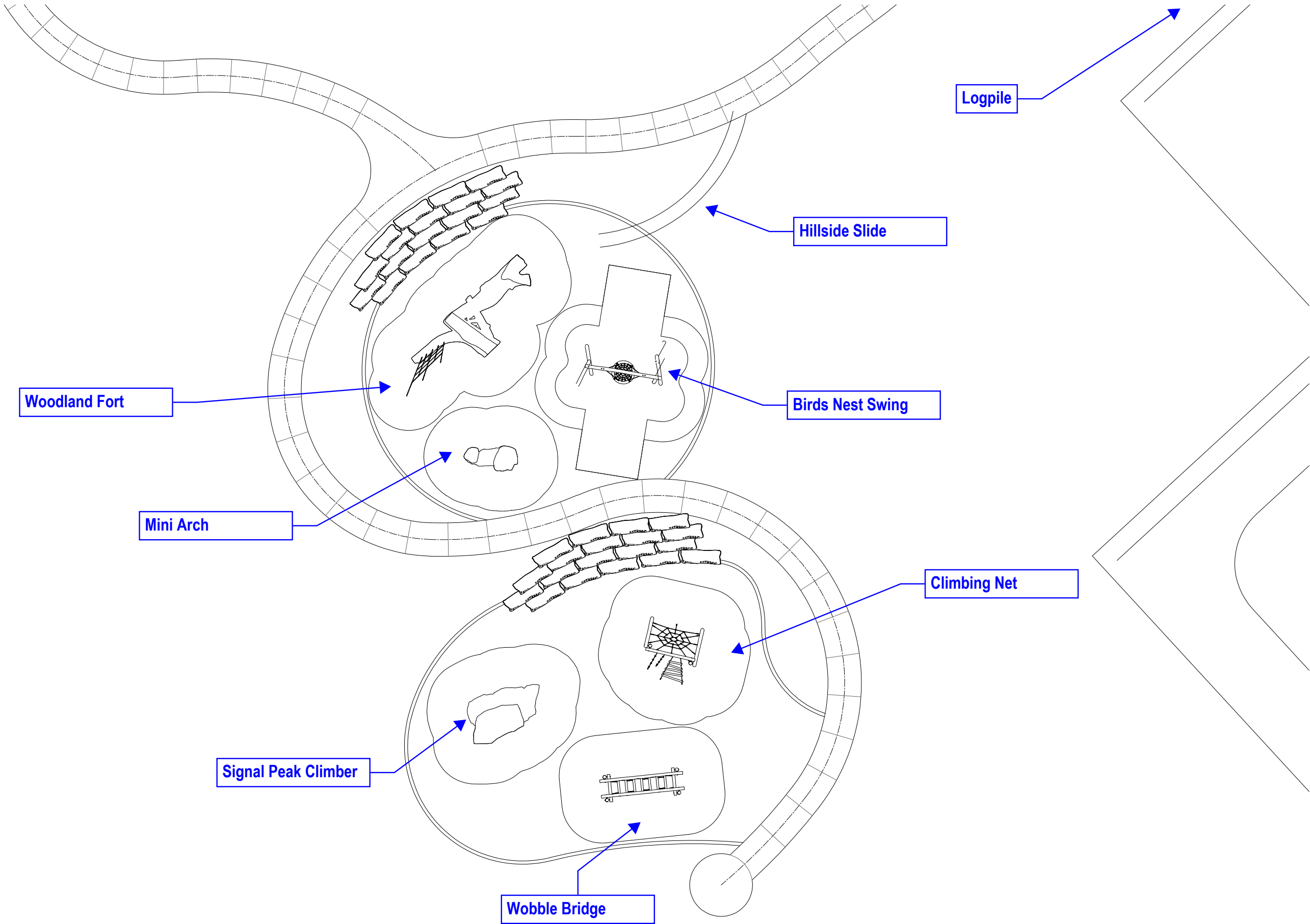


1st	Hillside Slide	90
2nd	Birds Nest Swing	73
3rd	Wobble Bridge	68
4th	Signal Peak	65
5th	Climbing Net	49
6th	Woodland Fort	48
7th	Stilts	40
8th	Logpile	39
9th	Slide Platform	38
10th	Mini Arch	37
11th	Spinner Plate	36
12th	Songbird	32
13th	Spring Board	27
14th	Crawling Pyramid	20



RECOMMENDATIONS







Pump



Concrete Channel



THANK YOU

CRESTWOOD COMMUNITY CENTER



DG2 Design
Landscape Architecture